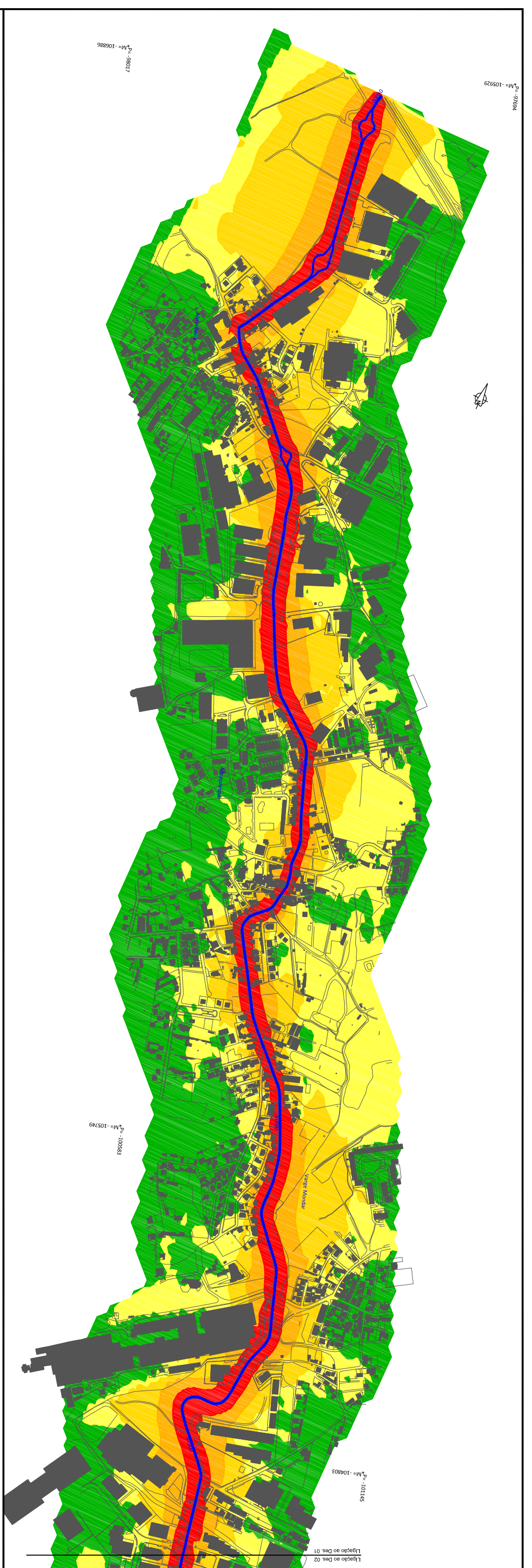


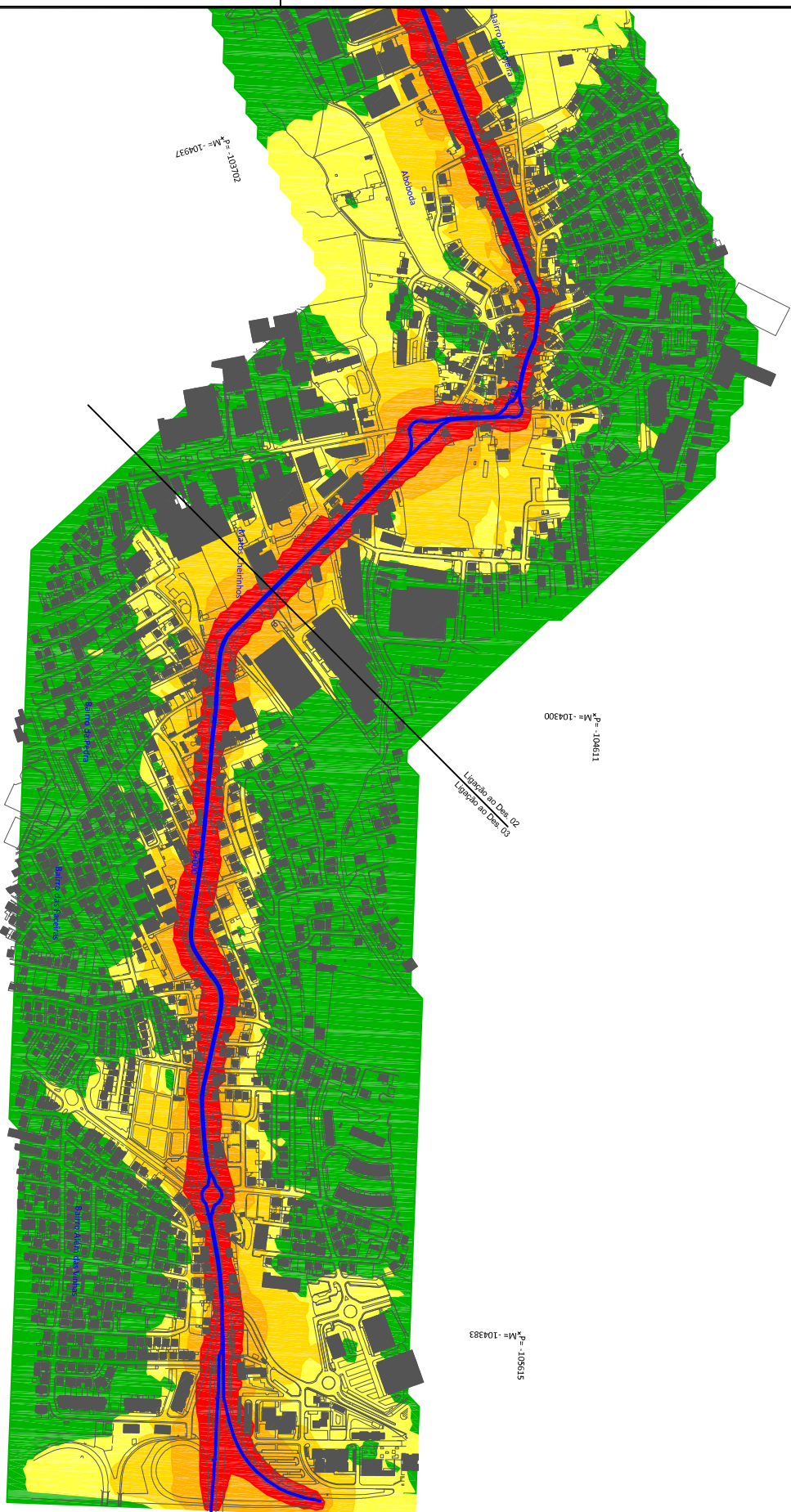
LEGENDA

Ln ≤ 45 dB(A)
45 < Ln ≤ 50 dB(A)
50 < Ln ≤ 55 dB(A)
55 < Ln ≤ 60 dB(A)
Ln > 60 dB(A)
Eixos da Via em Estudo



LEGENDA

Ln ≤ 45 dB(A)
45 < Ln ≤ 50 dB(A)
50 < Ln ≤ 55 dB(A)
55 < Ln ≤ 60 dB(A)
Ln > 60 dB(A)
Eixos da Via em Estudo



LEGENDA

	$L_n \leq 45$ dB(A)
	$45 < L_n \leq 50$ dB(A)
	$50 < L_n \leq 55$ dB(A)
	$55 < L_n \leq 60$ dB(A)
	$L_n > 60$ dB(A)
	Eixos da Via em Estudo